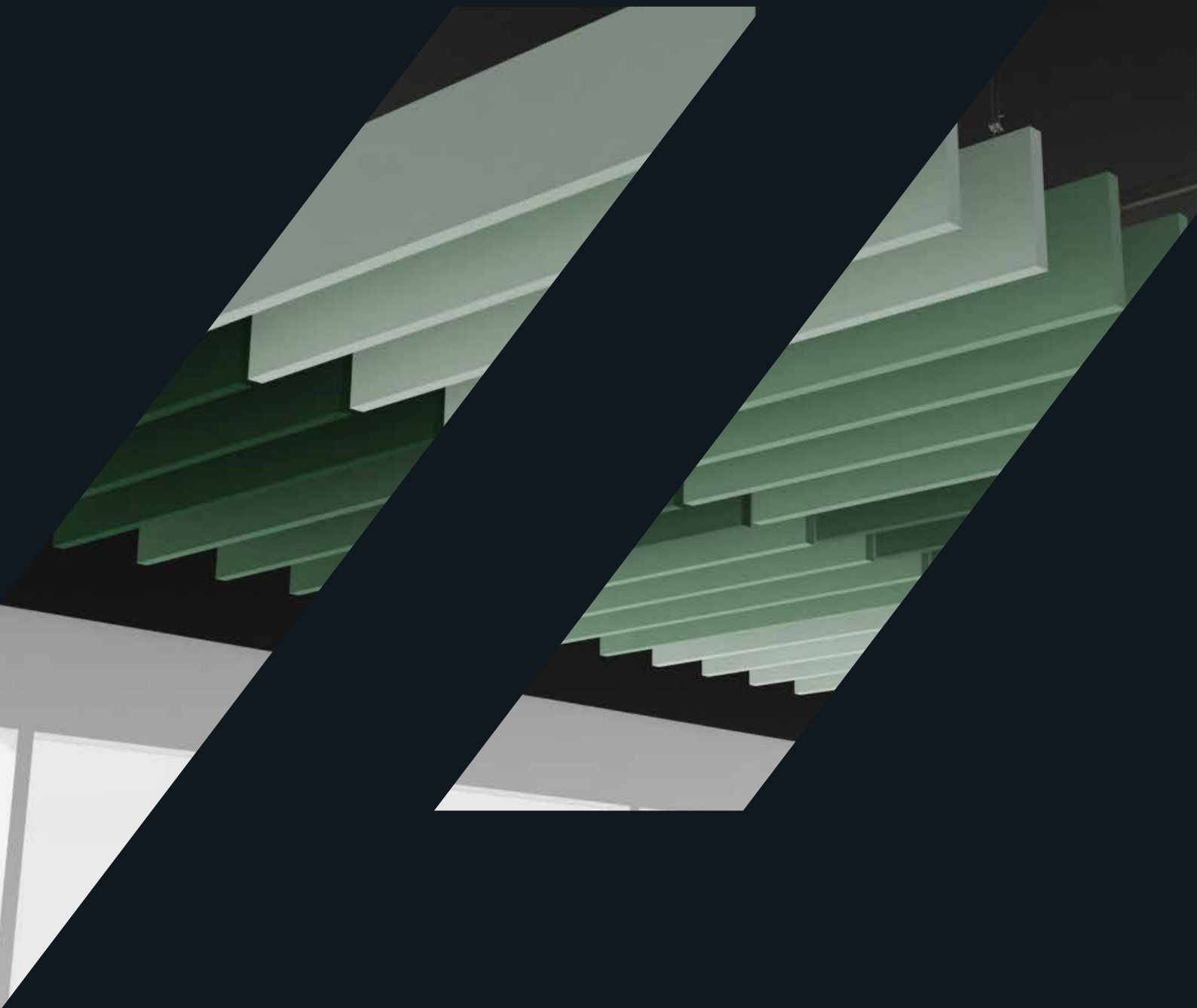
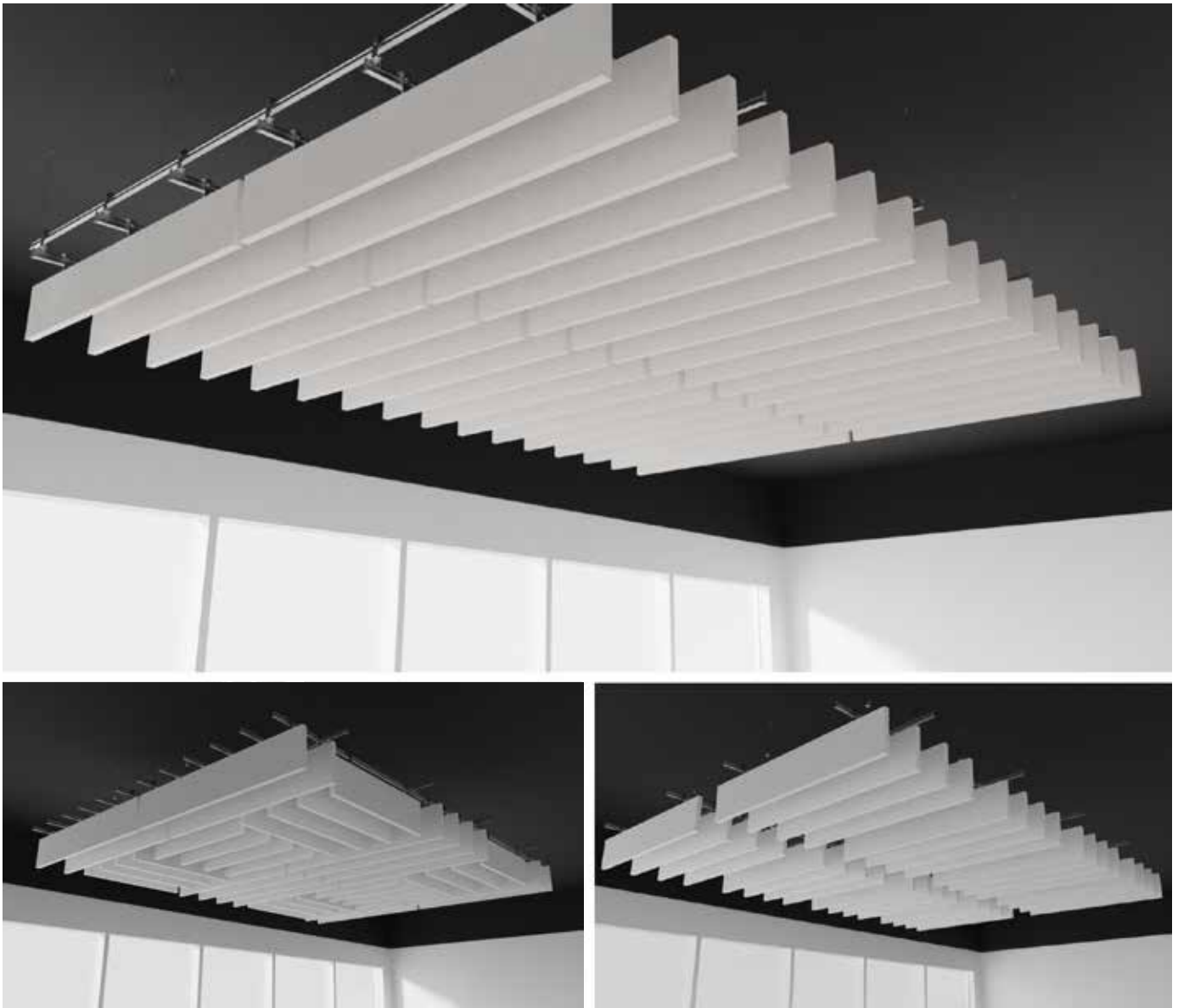




Baffles

Sonify Create Grid Installation Guide

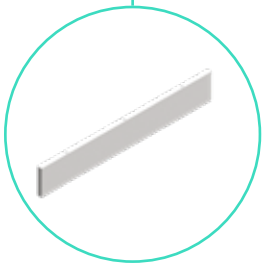
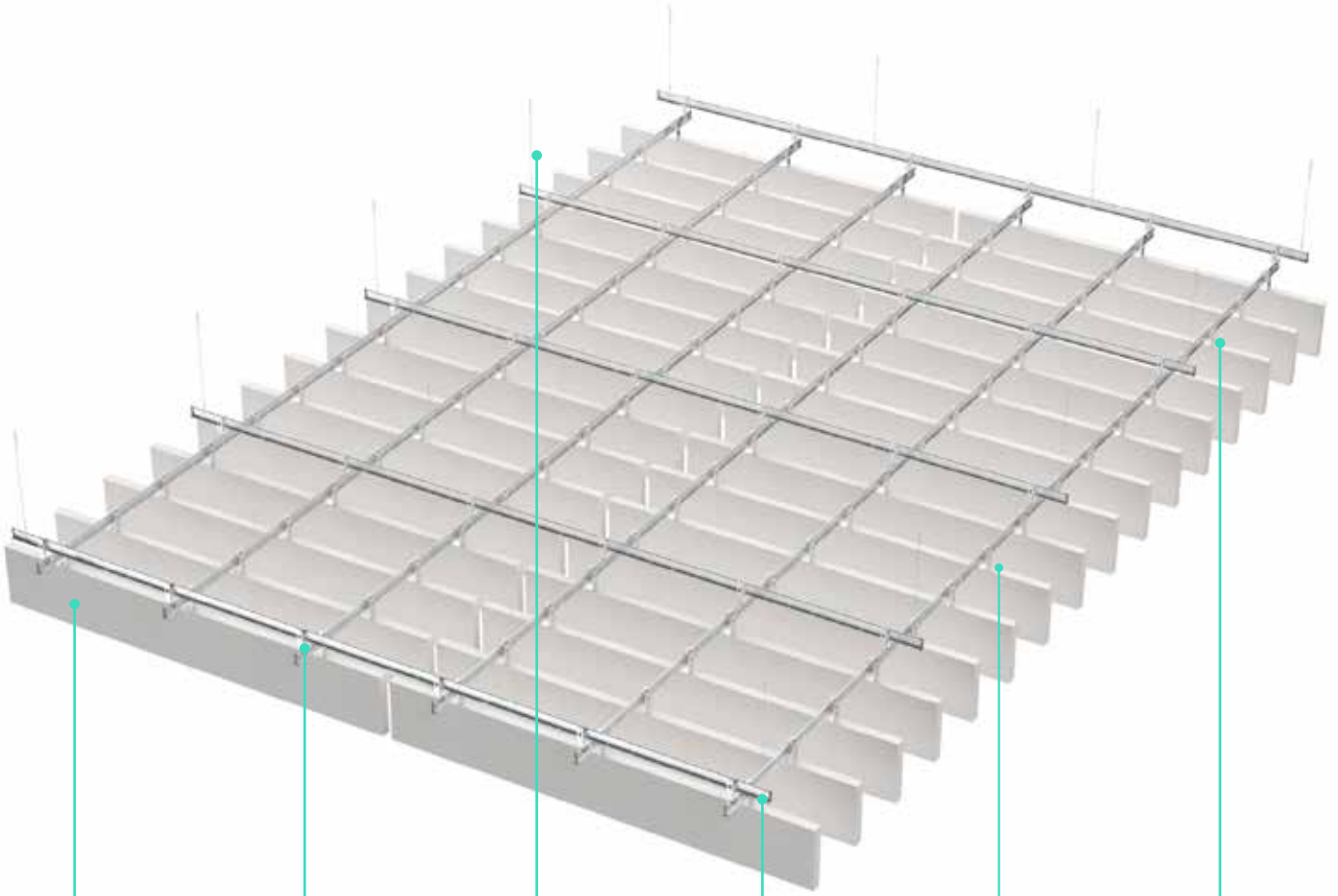




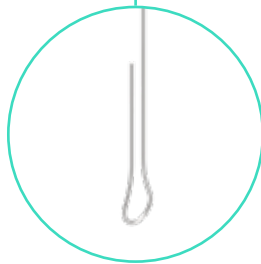
First time using Sonify?

The Sonify Create grid system is designed to reduce the amount of drilling and measuring required on site. Once the first steps are completed accurately, it always ensures perfect alignment, identical spacing and even heights throughout the whole installation, thanks to its 100mm grid logic. This allows you to save time while installing highly aesthetic and functional acoustic ceiling elements.

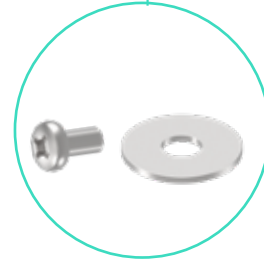
This is a generic installation guide. For details about your individual installation please refer to the specification documents provided by your specifier.



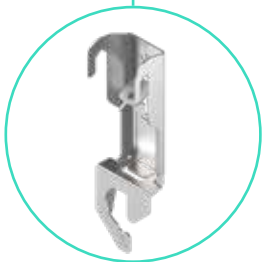
Baffle



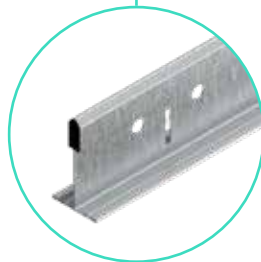
Wire Hanger



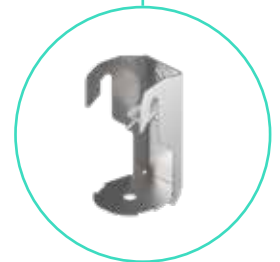
Screw and Washer



Runner to Runner Hanger



Main Runner



Panel Bracket

03 Required Items



Panel Bracket



Runner to Runner Hanger



Main Runner



Wire Hanger



Baffle

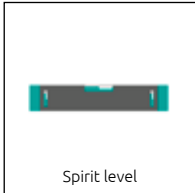
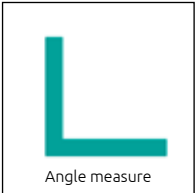


Screw and Washer

**Ceiling
Specification Documents**

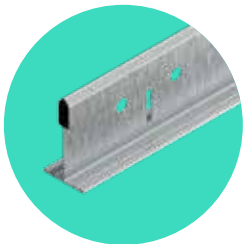
(Specific baffle specification document and Bill of Quantities)

04 Required Tools

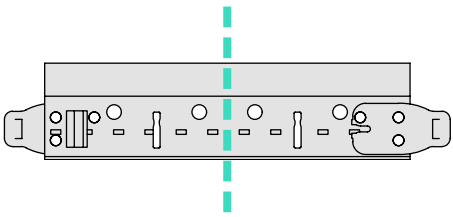


05 Main Runner Preparation

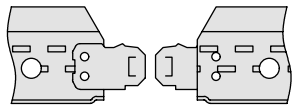
The runners need to be adjusted to the exact length required. They can be cut or clipped onto each other (they should always be cut in the middle between rout holes – not on a rout hole). There can be different runner lengths per configuration.



Main Runner



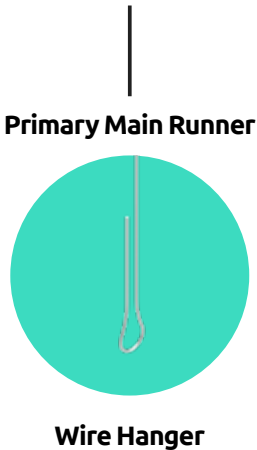
Cut



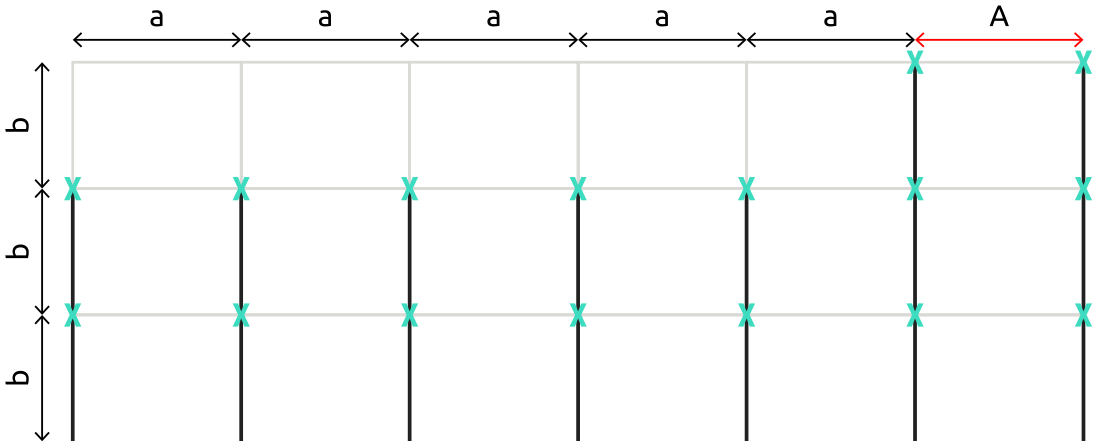
Clip

06 Wire Hanger

The hangers are fixed to the soffit above the primary runner. The last row and column distances can be irregular in some configurations.

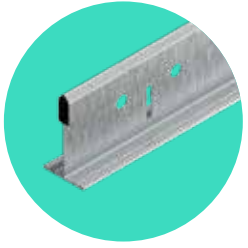


Wire Hanger

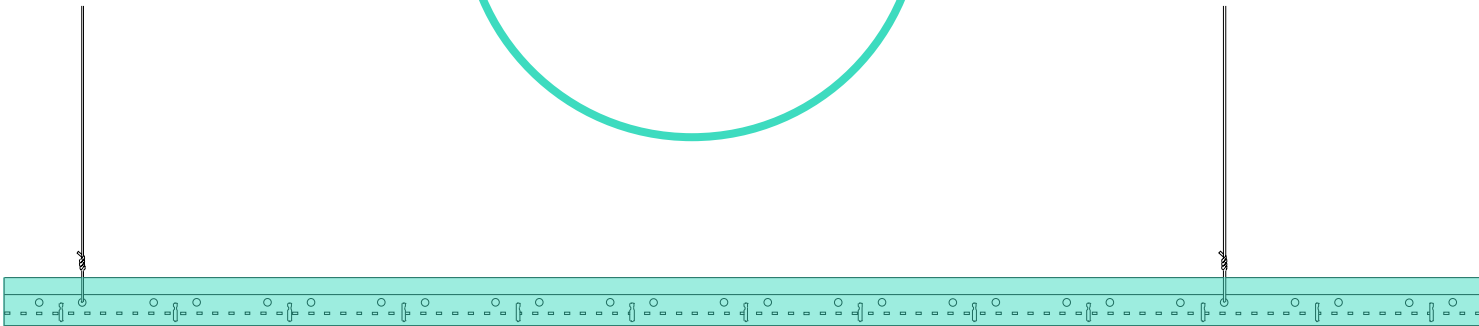
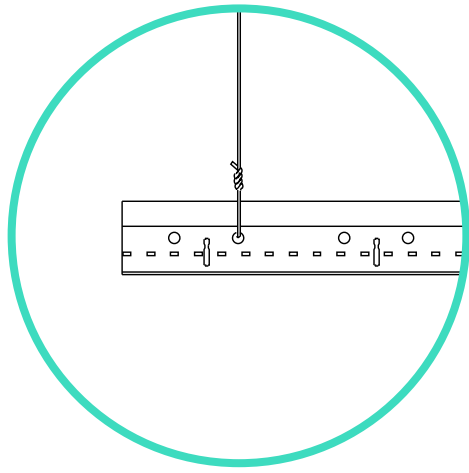


07 Suspend Primary Main Runners

Suspend the first layer of primary main runners from the wire hangers. Make sure that all runners are level and the rout holes are aligned.

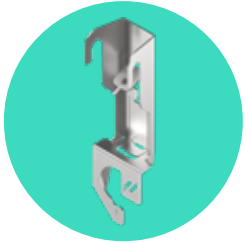


Primary Main Runner

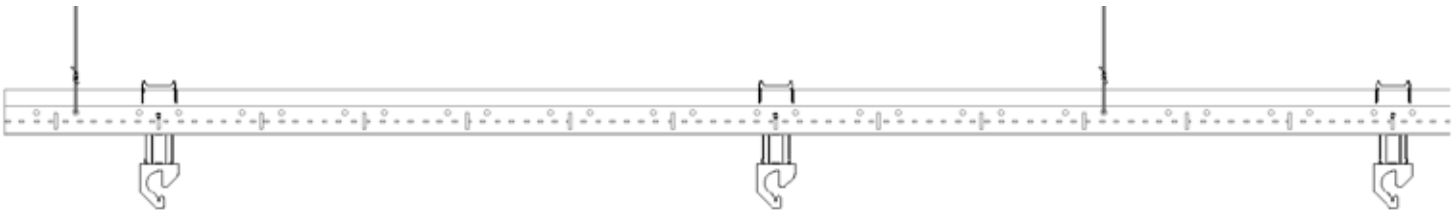
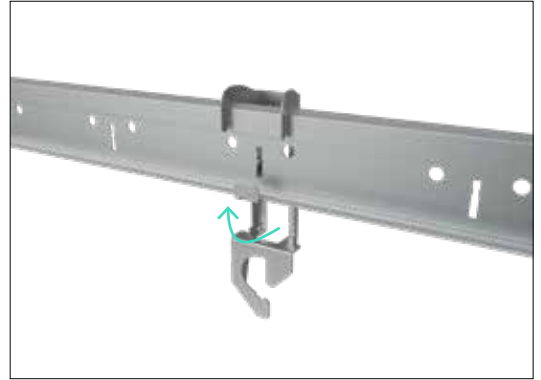


08 Runner to Runner Hanger

Hook on the runner to runner hangers to the primary main runner and lock them by bending the lower tab around the T.

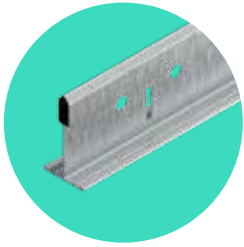


**Runner to Runner
Hanger**

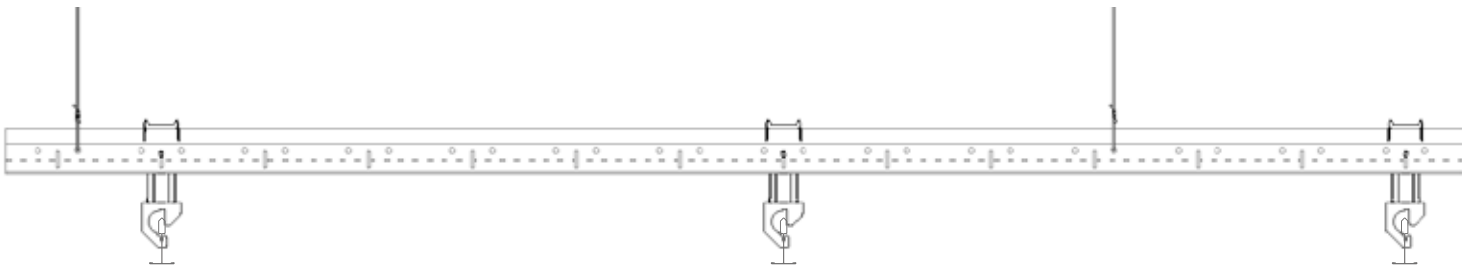
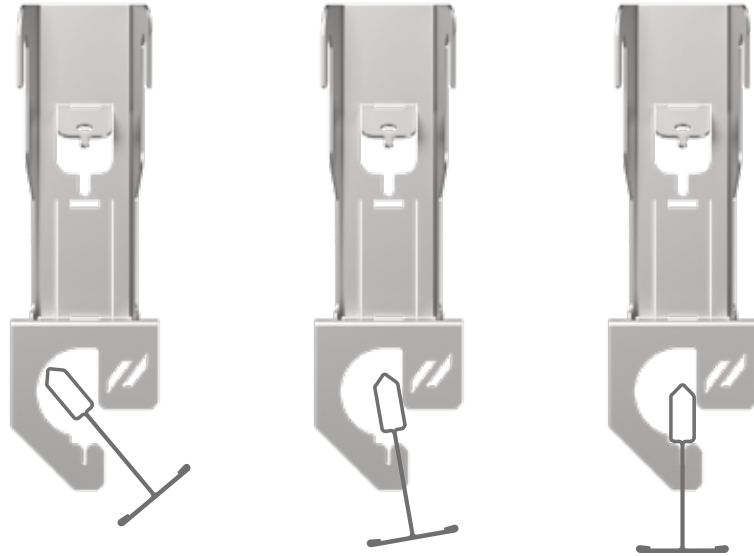


09 Secondary Main Runner

Suspend the secondary runners to the lower hooks on the runner to runner hangers. The hook must pass through the rout hole on the Secondary Main Runner.



Secondary Main Runner



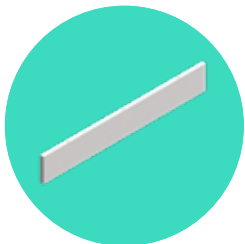
10 Hook on Baffle

The orientation of the hooks depends on the final position of the specific baffle. All hooks should be facing the same direction. Make sure that their orientation works for hooking onto the secondary runners (graphic 4).

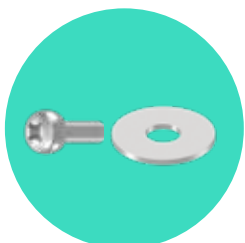
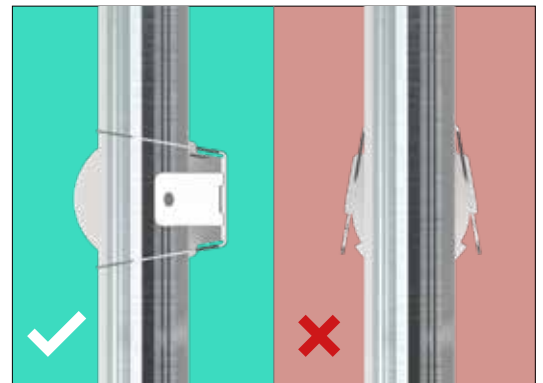
Mount the hooks onto the pre-installed anchors, using the screw and washer. Make sure that the screw is secure but not over tightened.



**Runner to Panel
Bracket**



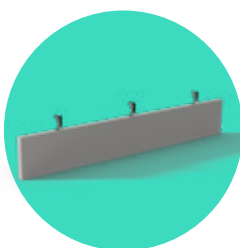
Baffle



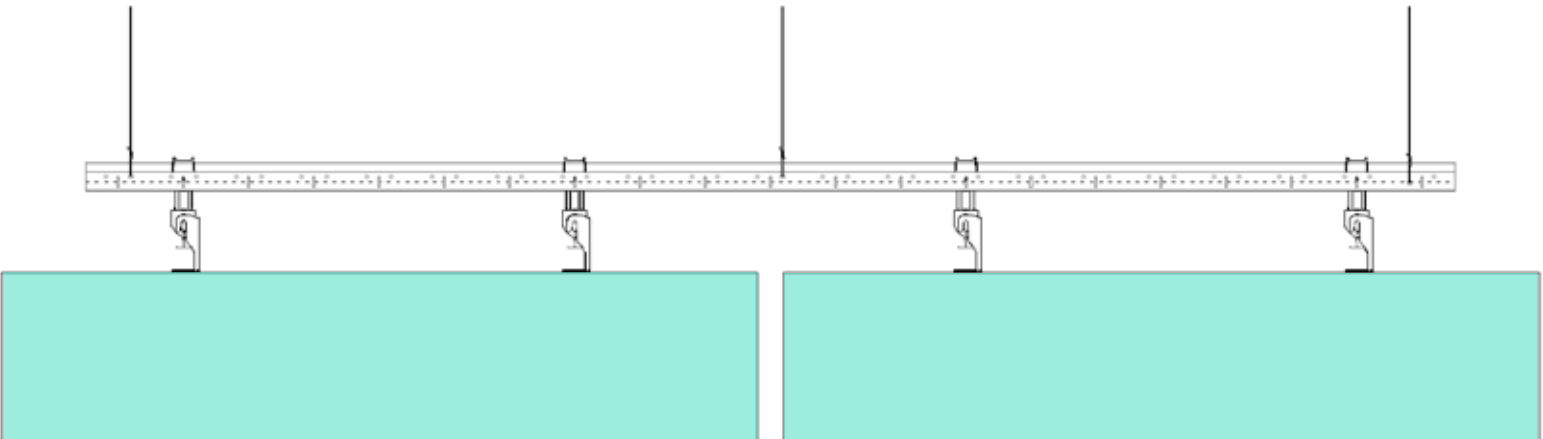
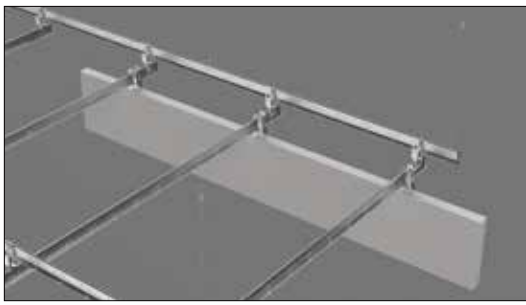
Screw & Washer

11 Baffle on Runner

Lift the baffle with its hooks over the secondary runner. For an accurate position within the grid, the locking tabs should lock into the rout holes.

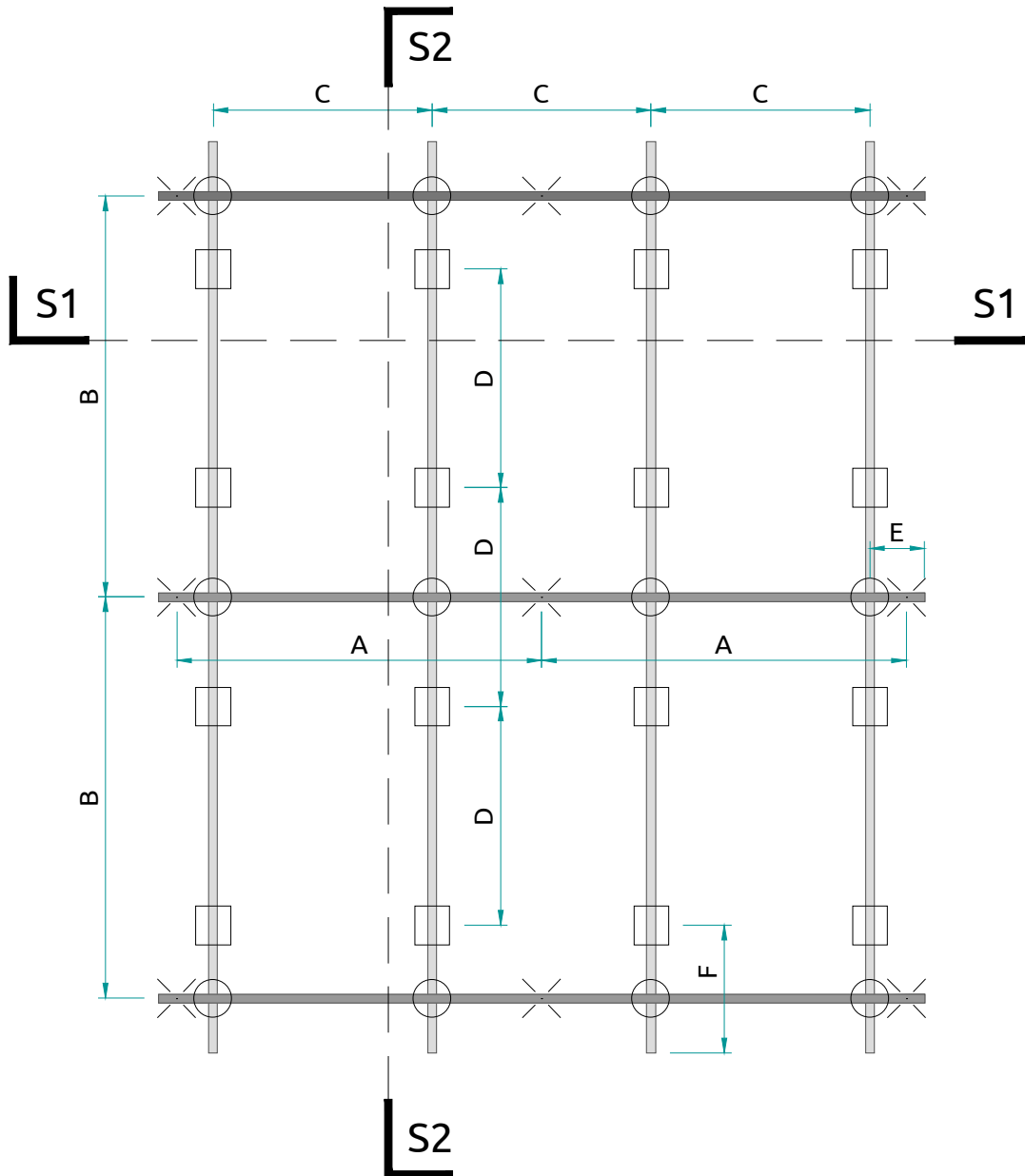


Baffle with Hooks





Typical grid layout



Key:

Primary Main Runner

Secondary Main Runner

Runner to Runner Hanger

Panel Bracket

Suspension point

A Pitch distance of suspension points = Max. 1200mm

B Pitch distance of upper primary main runner = Max. 1200mm

C Pitch distance of runner to runner hanger & lower secondary main runner

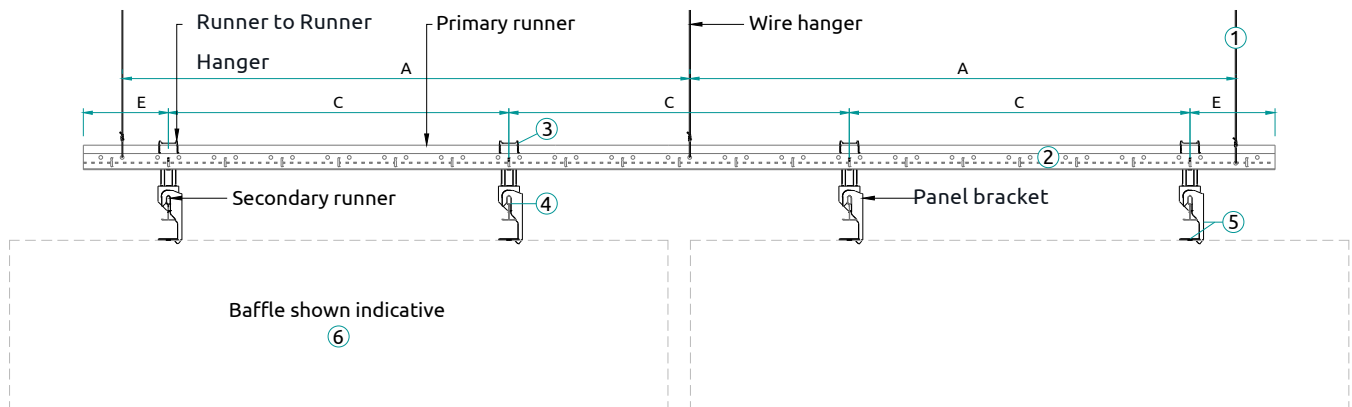
D Pitch distance of panel bracket

E Distance from runner connector hanger to cut edge of upper primary main runner = 150mm

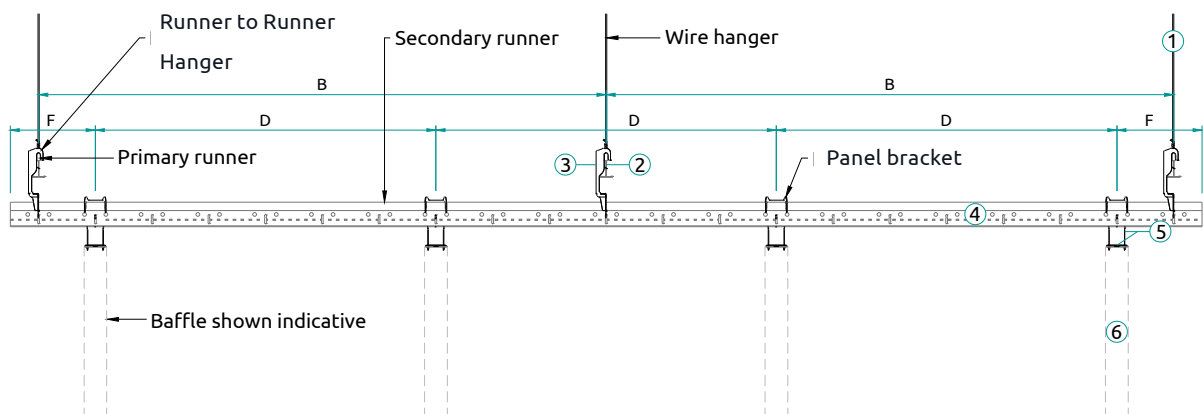
F Distance from panel bracket to cut edge of lower secondary main runner = 150mm

Configuration for Nexus

SECTION 1



SECTION 2



- A Pitch distance of suspension points = Max. 1200mm
- B Pitch distance of upper primary main runner = Max. 1200mm
- C Pitch distance of runner to runner hanger and lower secondary main runner
- D Pitch distance of panel bracket
- E Distance from runner to runner hanger to cut edge of upper primary main runner = 150mm
- F Distance from panel bracket to cut edge of lower secondary main runner = 150mm

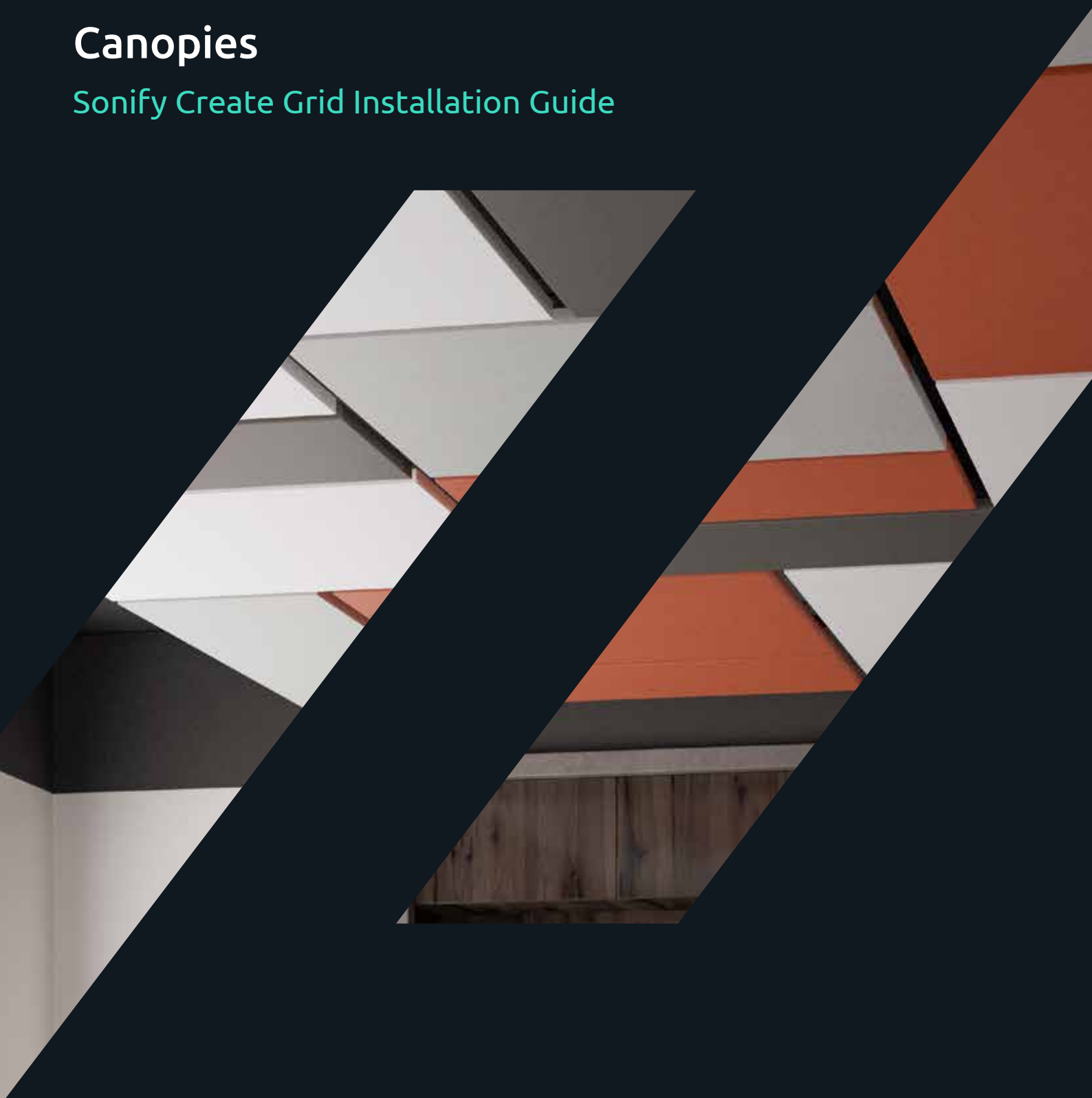
- 1 Locate suspension points and install hangers
- 2 Suspend upper primary main runner (length cut to suit based on layout)
- 3 Locate central runner to runner hanger
- 4 Suspend lower secondary main runner (length cut to suit based on layout)
- 5 Attach panel bracket to panel anchor in rear of canopy
- 6 Suspend baffles from secondary main runners

Zentia does not provide professional design services but gives information to guide decisions by others as to the most suitable Zentia products. Zentia does not warrant, and assumes no liability for the accuracy, completeness, applicability, or fitness for purpose for any particular installation, as a result of any information used. INS.079.1.10.22



Canopies

Sonify Create Grid Installation Guide

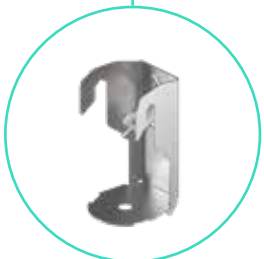
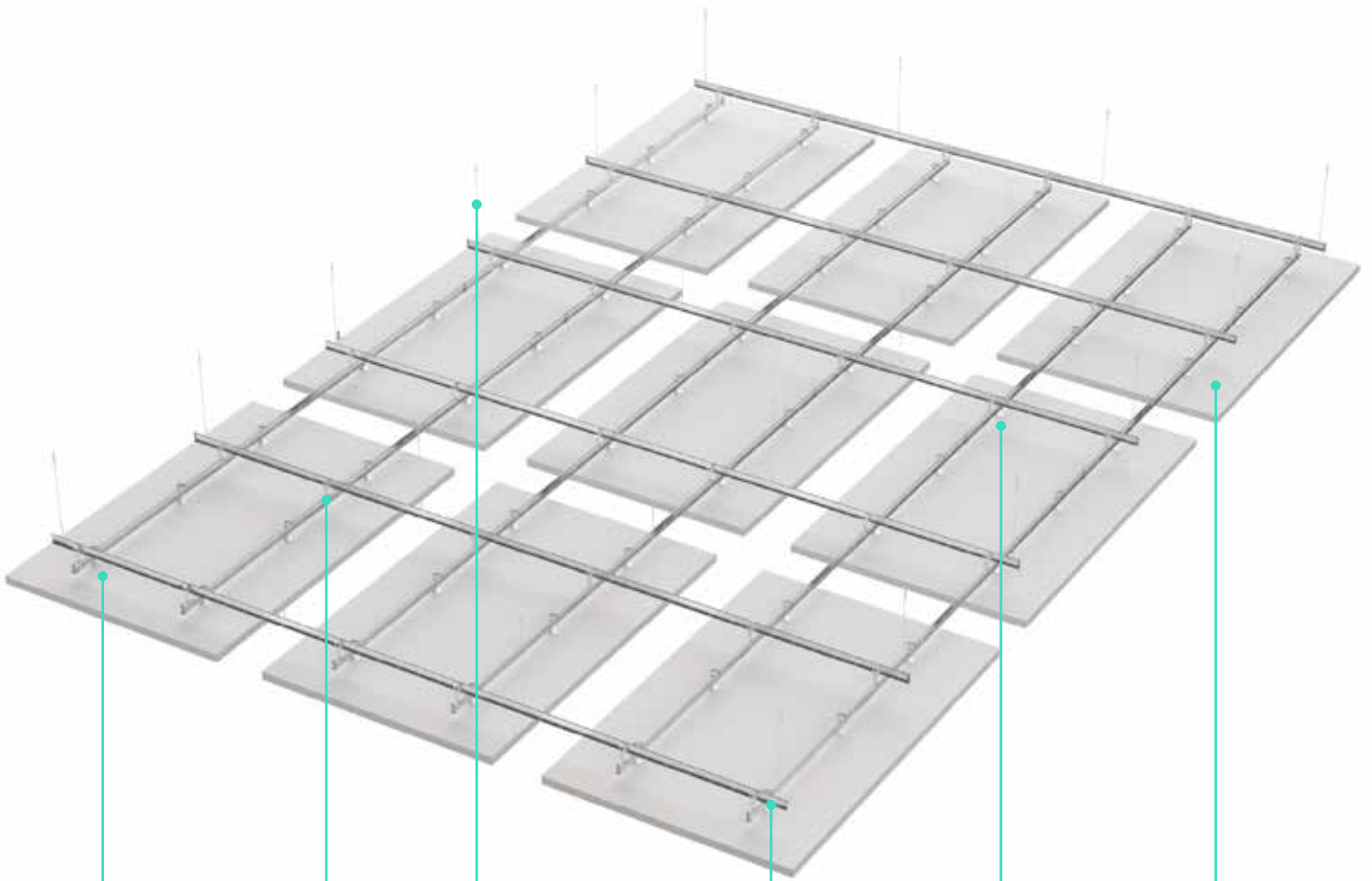




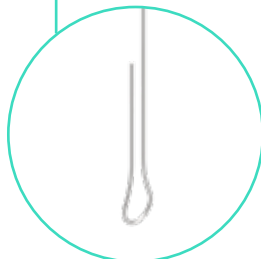
First time using Sonify?

The Sonify Create grid system is designed to reduce the amount of drilling and measuring on site. Once the first steps are completed accurately, it always ensures perfect alignment, identical spacing and even heights throughout the whole installation, thanks to its 100mm grid logic. This allows you to save time while installing highly aesthetic and functional acoustic ceiling elements.

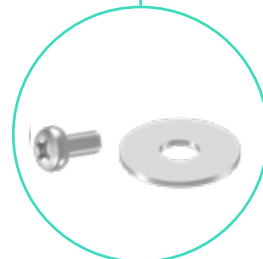
This is a generic installation guide. For details about your individual installation please refer to the specification documents provided by your specifier.



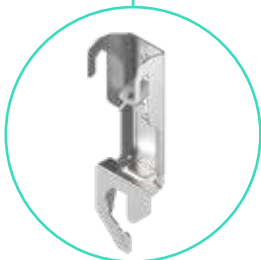
Panel Hook



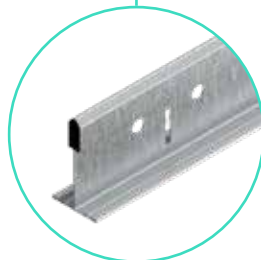
Wire Hanger



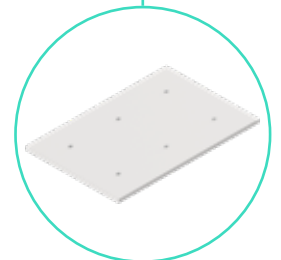
Screw and Washer



Runner to Runner Hanger



Main Runner



Canopy

03 Required Items



Panel Bracket



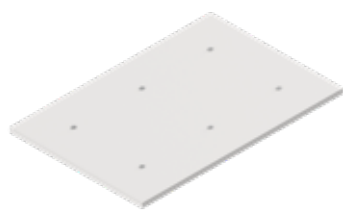
Runner to Runner Hanger



Main Runner



Wire Hanger



Canopy

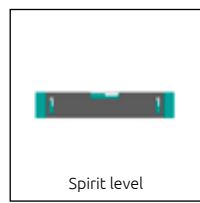
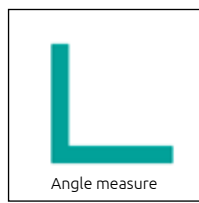
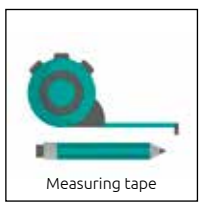


Screw and washer

Ceiling Specification Docs

(Specific canopy specification document and Bill of Quantities)

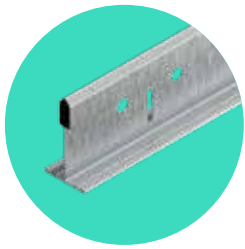
04 Required Tools



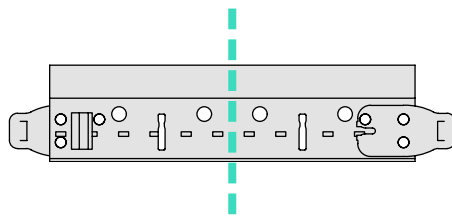
05 Runner preparation

Runner preparation

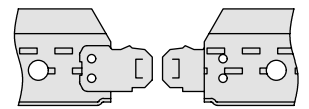
The runners need to be adjusted to the exact length required. They can be cut or clipped onto each other (they should always be cut in the middle between rout holes – not on a rout hole). There can be different runner lengths per configuration.



Main Runner



Cut



Clip

06 Wire hanger

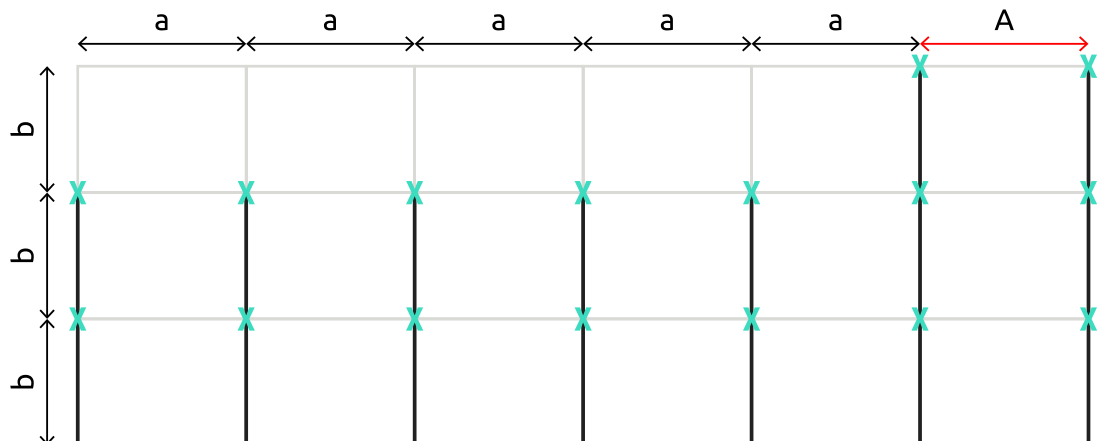
The hangers are fixed to the soffit above the primary main runner. The last row and column distances can be irregular in some configurations.



Primary Main Runner

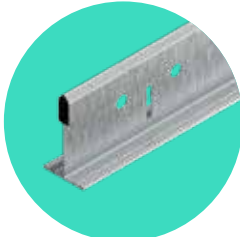


Wire Hanger

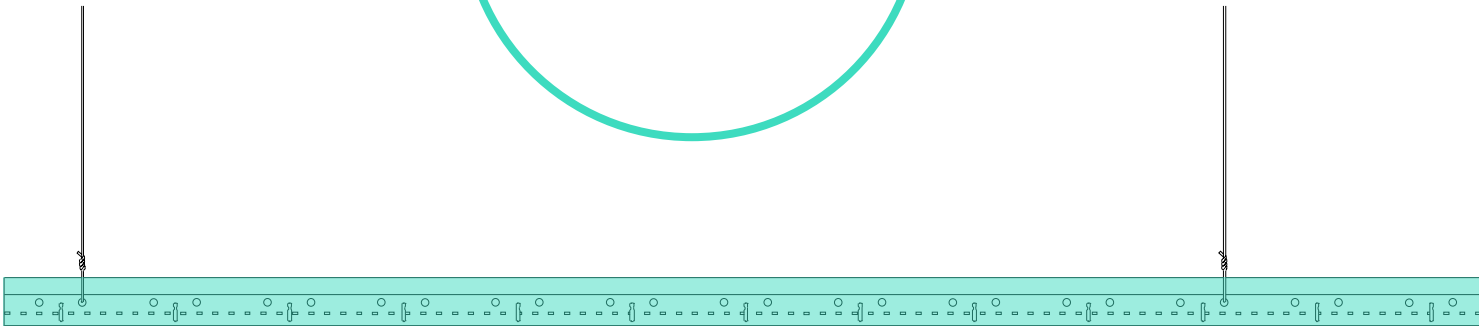
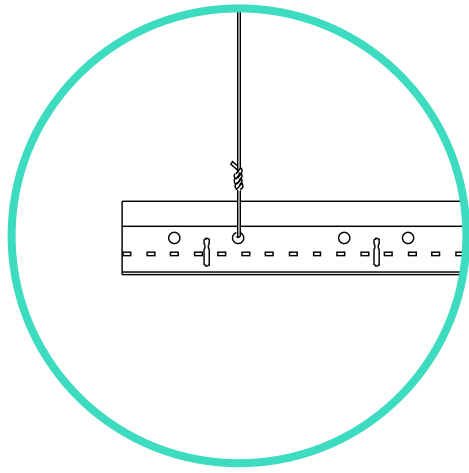


07 Suspend Primary Main Runners

Suspend the first layer of primary main runners from the wire hangers. Make sure that all runners are level and the rout holes are aligned.

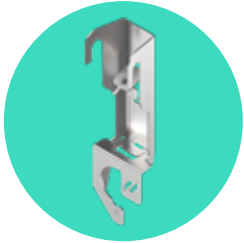


Primary Main Runner

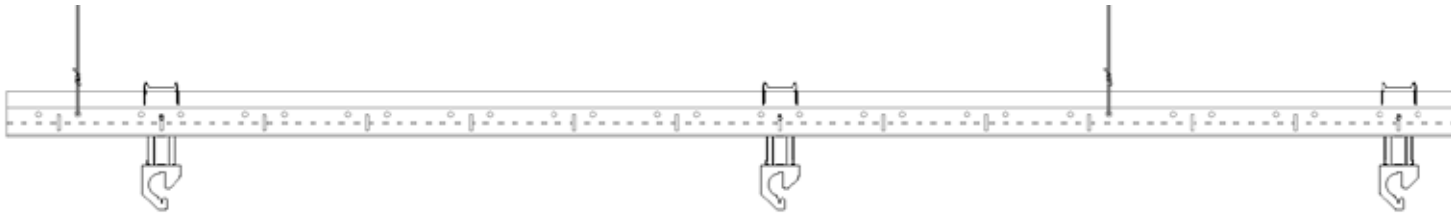
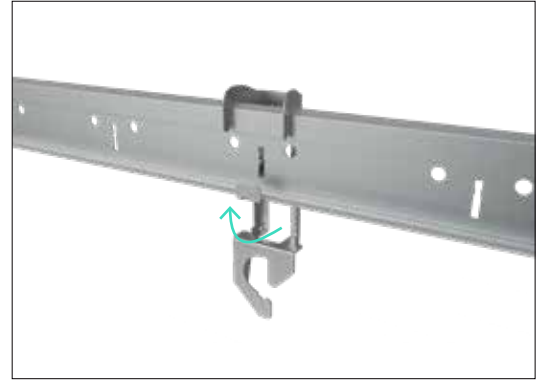


08 Runner Connector

Hook on the runner to runner hangers to the primary main runner and lock them by bending the lower tab around the T.

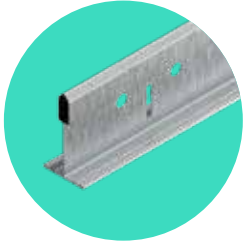


**Runner to Runner
Hanger**

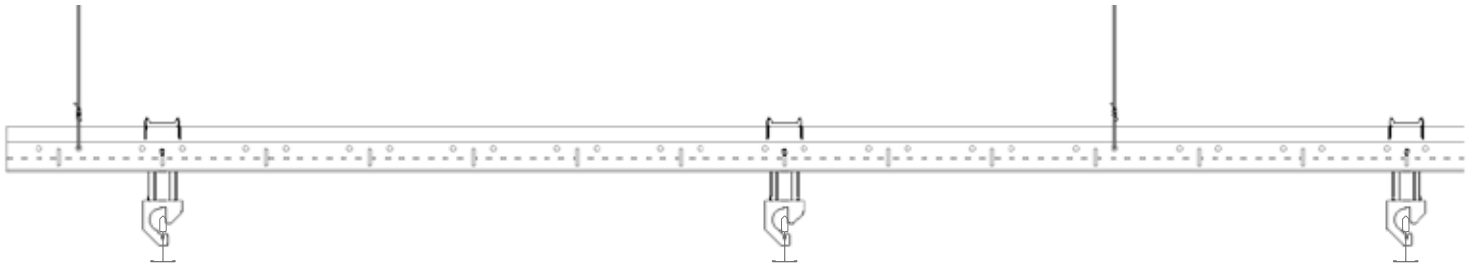
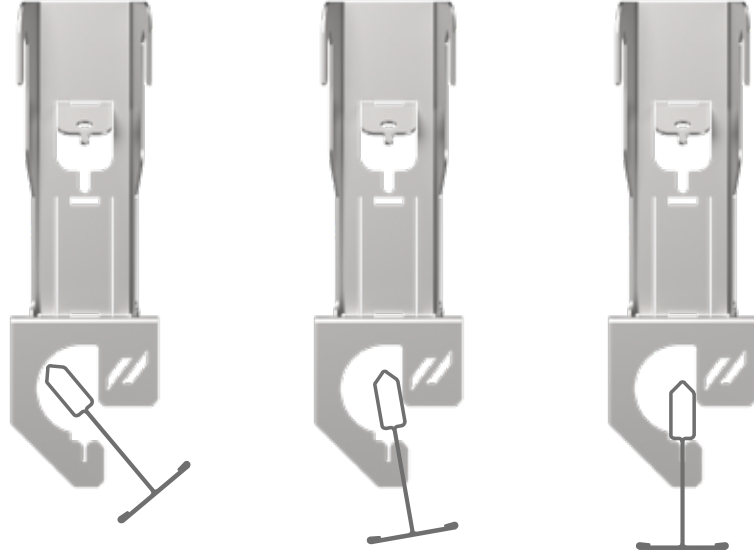


09 Secondary Main Runner

Suspend the secondary main runners to the lower hooks on the runner to runner hangers. The hook must pass through the rout hole on the secondary main runner.



Main Runner



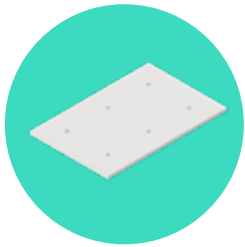
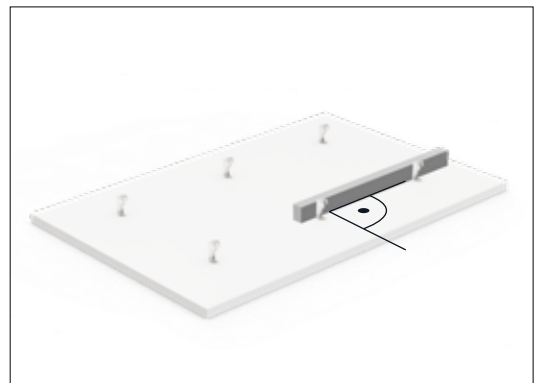
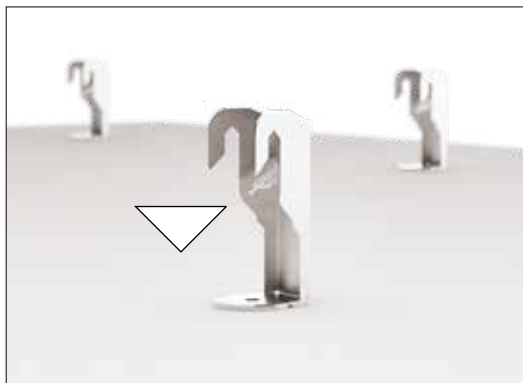
10 Hook on Canopy

The orientation of the hooks depends on the final position of the specific canopy. All hooks should be facing the same direction. Make sure that their orientation works for hooking onto the secondary runners (graphic 4).

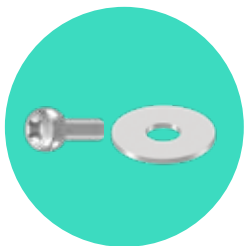
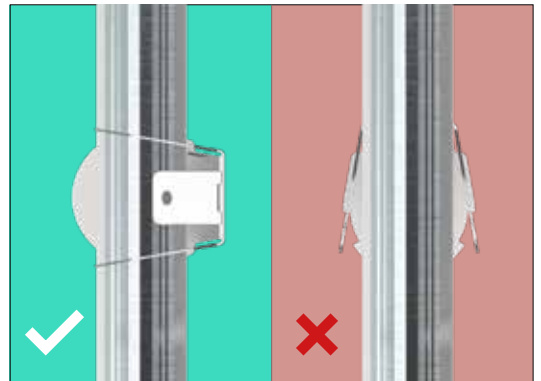
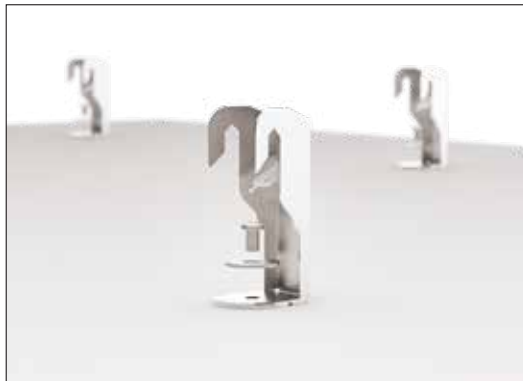
Mount the hooks onto the pre-installed panel anchors using the screw and washer. Make sure that the screw is secure but not over tightened.



**Runner to Panel
Bracket**



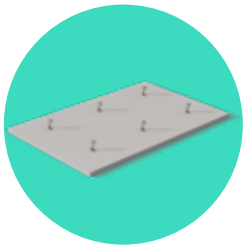
Canopy



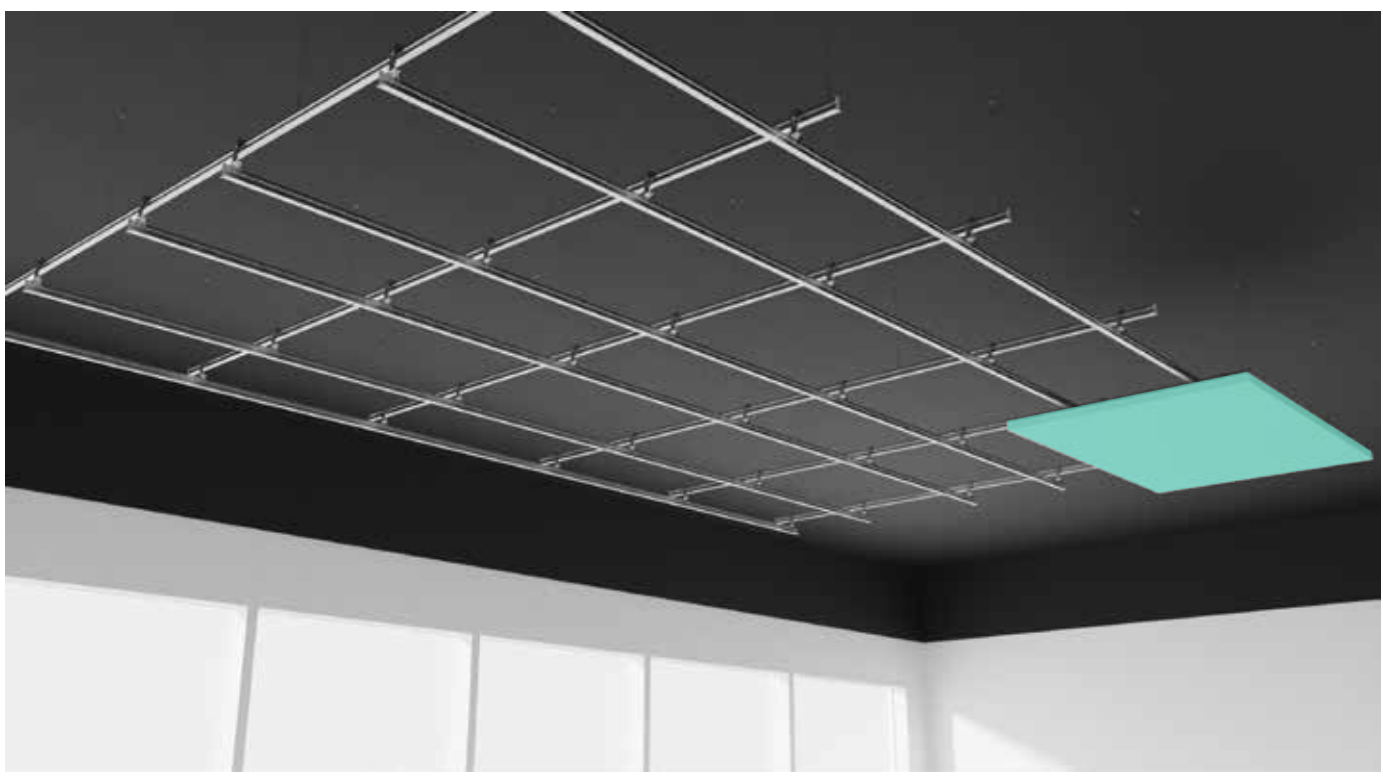
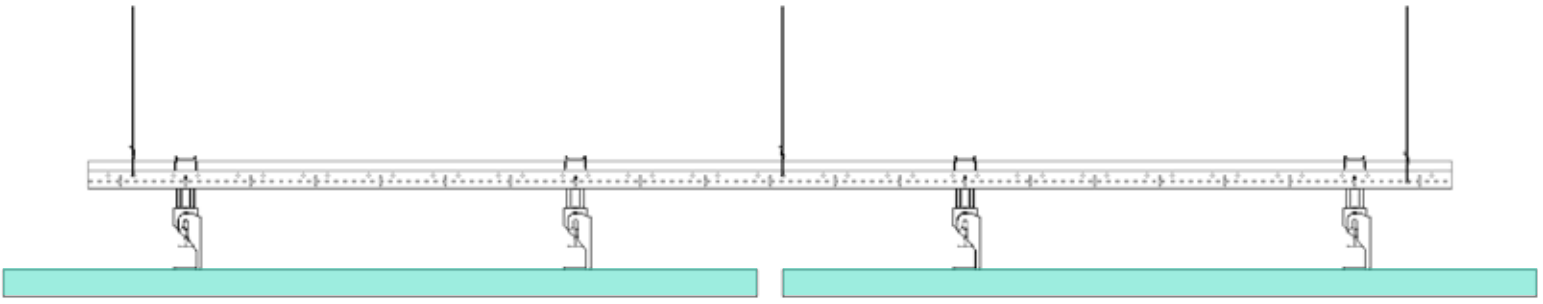
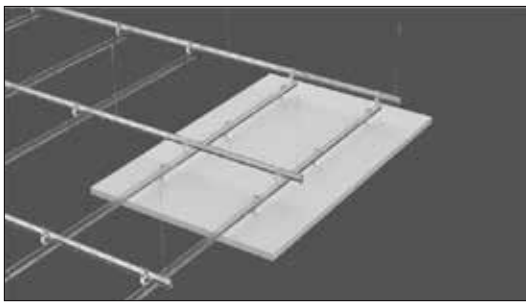
Screw & Washer

11 Canopy on Runner

Lift the canopy with its hooks over the secondary runner. For an accurate position within the grid, the locking tabs should lock into the rout holes.

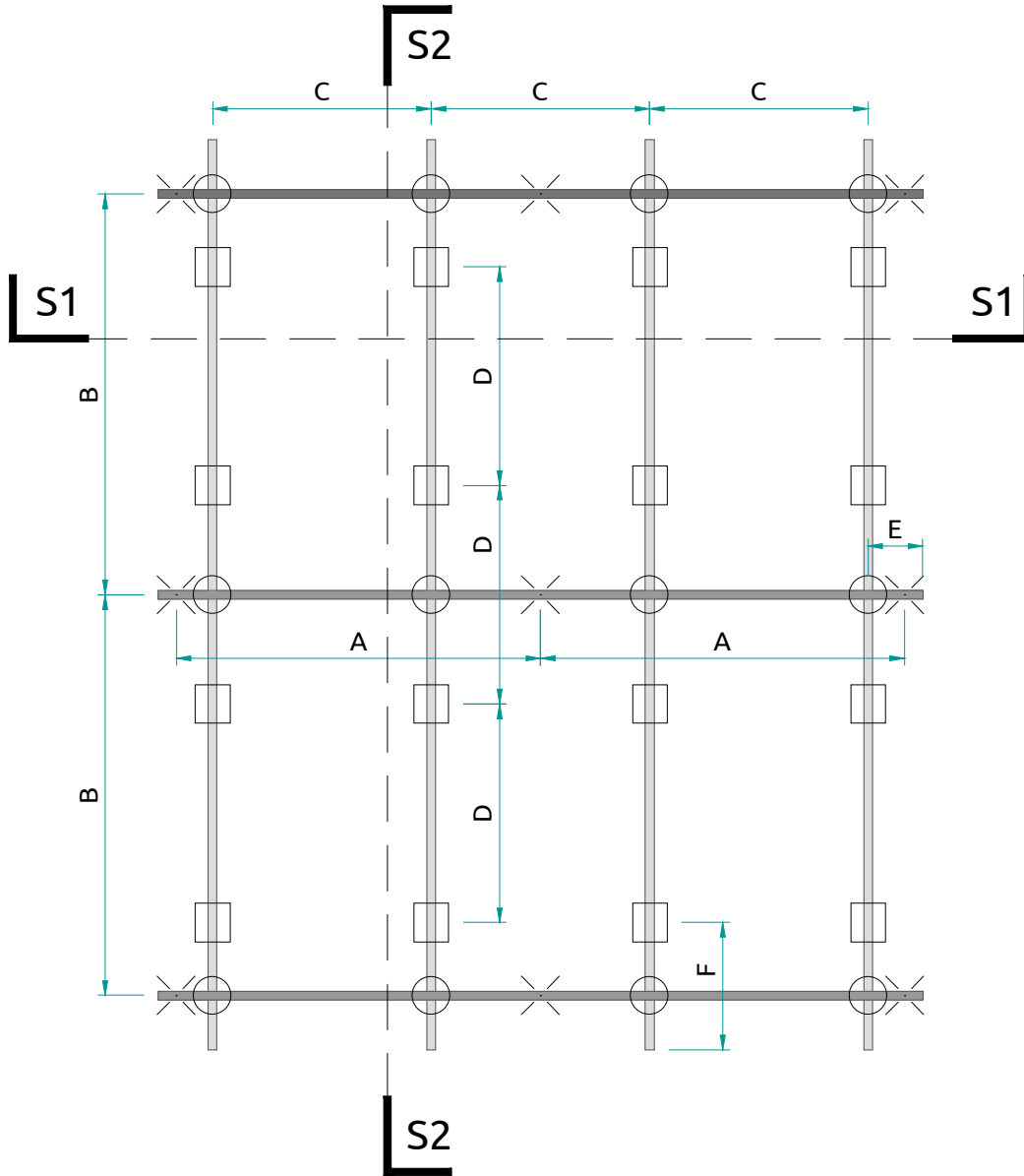


Canopy with Hooks





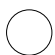
Typical grid layout




Key:

 Primary Main Runner

 Secondary Main Runner

 Runner to Runner Hanger

 Panel Bracket

 Suspension point

A Pitch distance of suspension points = Max. 1200mm

B Pitch distance of upper primary main runner = Max. 1200mm

C Pitch distance of runner to runner hanger & lower secondary main runner

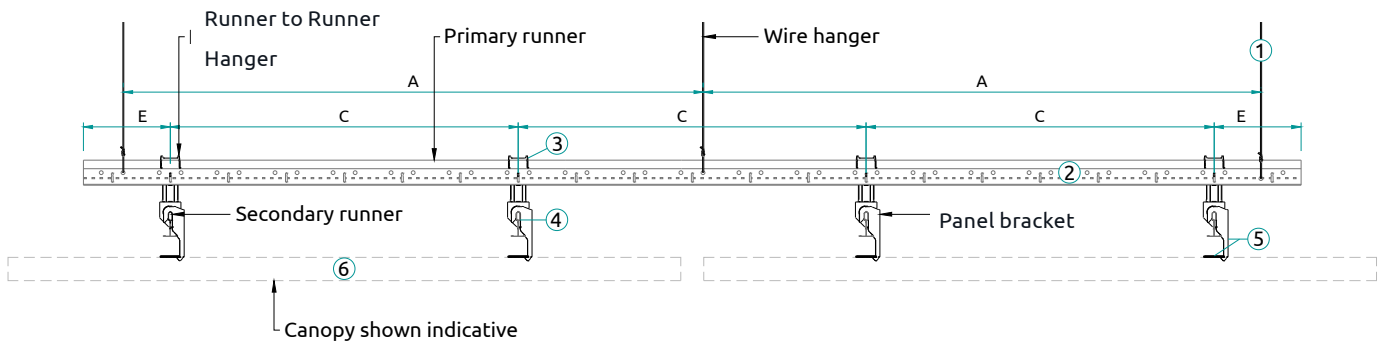
D Pitch distance of panel bracket

E Distance from runner connector hanger to cut edge of upper primary main runner = 150mm

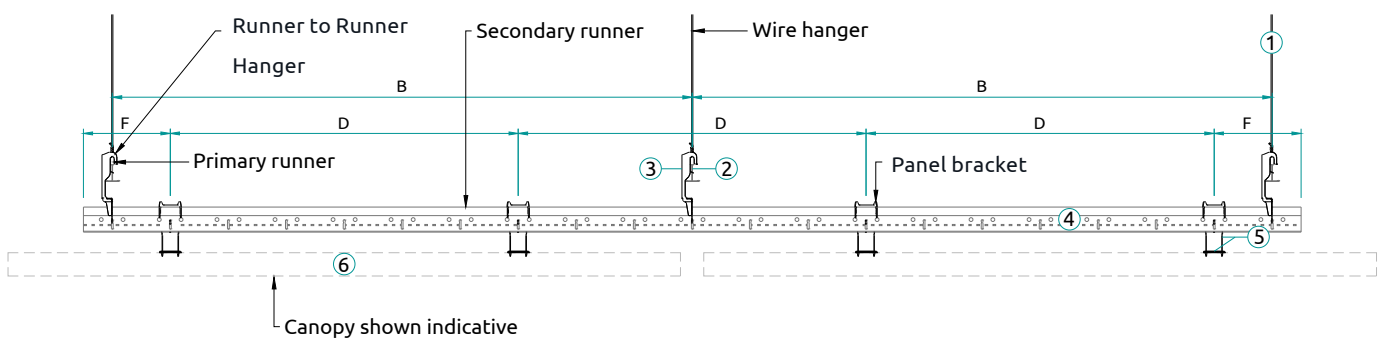
F Distance from panel bracket to cut edge of lower secondary main runner = 150mm

Configuration and Nexus

SECTION 1



SECTION 2



- A Pitch distance of suspension points = Max. 1200mm
- B Pitch distance of upper primary main runner = Max. 1200mm
- C Pitch distance of runner to runner hanger and lower secondary main runner
- D Pitch distance of panel bracket
- E Distance from runner to runner hanger to cut edge of upper primary main runner = 150mm
- F Distance from panel bracket to cut edge of lower secondary main runner = 150mm

- 1 Locate suspension points and install hangers
- 2 Suspend upper primary main runner (length cut to suit based on layout)
- 3 Locate central runner to runner hanger
- 4 Suspend lower secondary main runner (length cut to suit based on layout)
- 5 Attach panel bracket to panel anchor in rear of canopy
- 6 Suspend baffles from secondary main runners

Zentia does not provide professional design services but gives information to guide decisions by others as to the most suitable Zentia products. Zentia does not warrant, and assumes no liability for the accuracy, completeness, applicability, or fitness for purpose for any particular installation, as a result of any information used. INS.078.1.10.22