

Sonify Wall Absorbers

Improve the acoustic environment of a room
by introducing Sonify Wall Absorbers.

Key Features

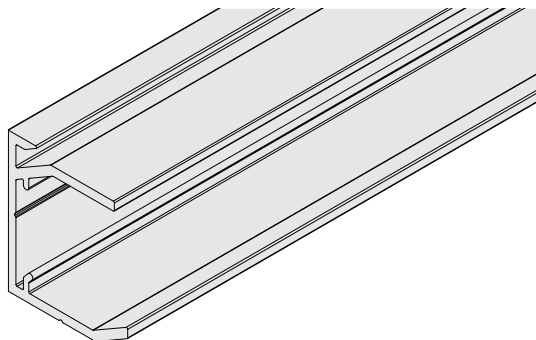
- Enhanced vertical sound absorption contributing to a total room solution
- Glued or use our wall mounted grid system for fast efficient installation
- Combine several panels to create a feature wall
- Each design is ordered using an assigned kit ID and supplied as a 'kit of parts'
- Available in a wide range of 35 colours and 7 shapes
- Outstanding acoustic performance: Reduce noise levels, increase speech intelligibility and reduce reverberation time in the space
- Ideal for a multitude of environments including hospitality, education, retail and commercial spaces

Product	Wall Absorbers																										
Sizes (mm)	<div>RECTANGLE</div> <div><div><div>14kg</div><div>2360mm</div><div>1160mm</div></div></div>			<div>CIRCLE</div> <div><div><div>5.5kg</div><div>Ø1160mm</div></div></div>		<div>HEXAGON</div> <div><div><div>5.5kg</div><div>1300mm</div><div>1160mm</div></div></div>																					
Thickness (mm)	40																										
Sustainability	<div><div><div></div><div>85%</div></div><div><div></div><div>EN 13964 / E1</div></div></div>																										
Acoustics	<div><div><div></div><div>EN ISO 354 & EN ISO 11654</div></div><table><tr><th>Distance mounted from wall (mm)</th><th>α_w</th><th>Class</th><th>NRC</th><th>125</th><th>250</th><th>500</th><th>1000</th><th>2000</th></tr><tr><td>25</td><td>1.00</td><td>A</td><td>1.00</td><td>0.40</td><td>0.85</td><td>1.00</td><td>1.00</td><td>1.00</td></tr></table><div>Hz α_p</div><div>Sonify Wall Absorber tested in a white finish</div></div>									Distance mounted from wall (mm)	α_w	Class	NRC	125	250	500	1000	2000	25	1.00	A	1.00	0.40	0.85	1.00	1.00	1.00
Distance mounted from wall (mm)	α_w	Class	NRC	125	250	500	1000	2000																			
25	1.00	A	1.00	0.40	0.85	1.00	1.00	1.00																			
Fire Reaction	<div><div><div></div><div>Euroclass A2-s2, d0 (All colours) EN 13501-1</div></div></div>																										
Performances & Features	<div><div><div></div><div></div><div></div><div><div>10 Year System Guarantee</div></div></div></div>																										

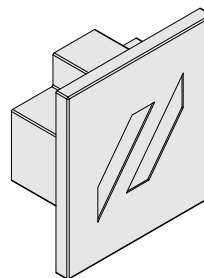
Sonify Wall Absorbers tested in a white finish

Wall Absorber Accessories

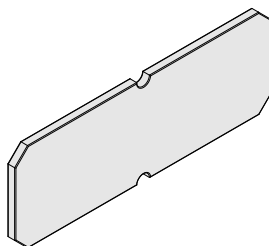
These components are used for the Sonify Wall Absorber grid system



Grid Cleat*



Wall Absorber Cleat End Cap



Grid Cleat joining Splice Plate

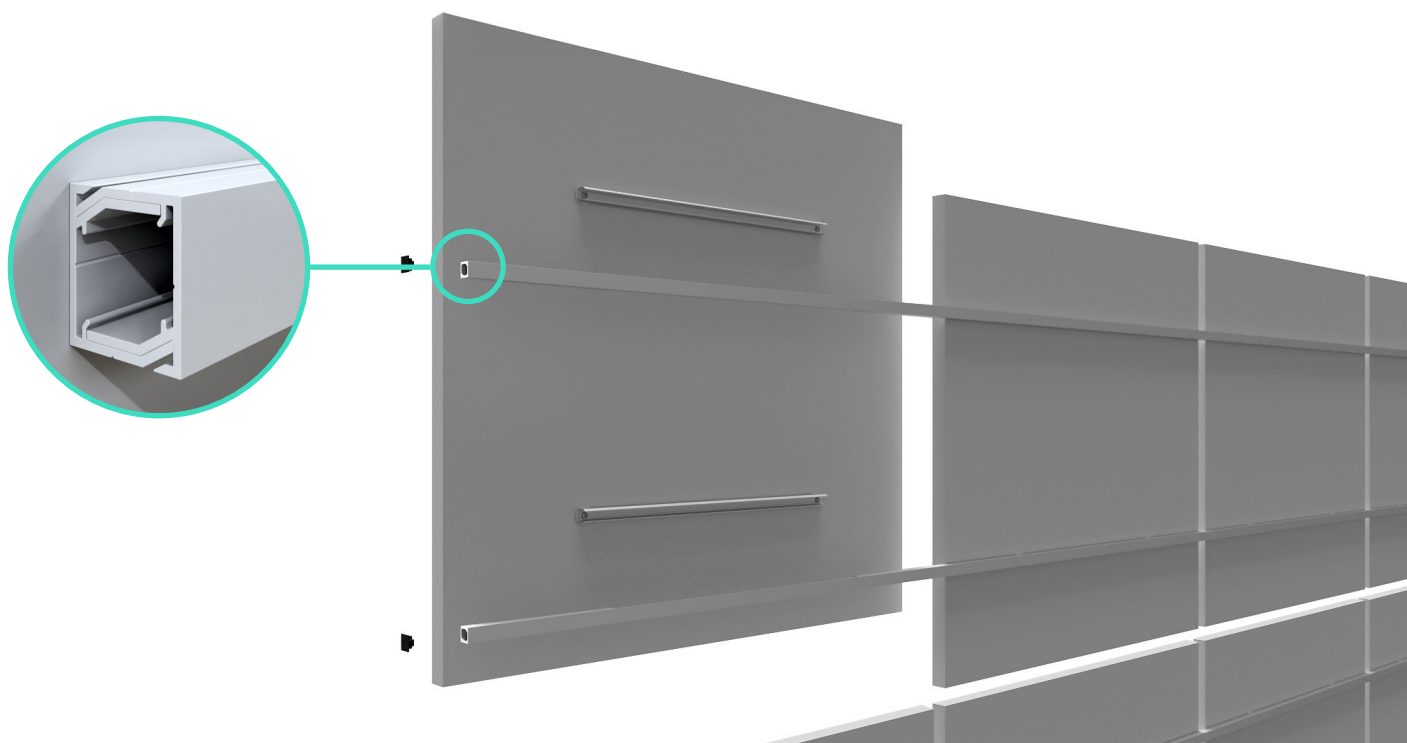


Stand-alone canopies can be glued to the wall.

Zentia recommends grab adhesive CT-1 Power Grab and Bond (PGB), by others.

If using a different adhesive, follow the manufacturers recommendations.

*Screws to be provided by contractor, suitable for fixing cleat to the wall



Sonify Wall Absorber grid system assembled

Colour Range

Sonify Wall Absorbers are available in the following 35 colours:

 WH1 RAL 9003	 BL5 RAL 260 90 05	 GR5 RAL 130 90 10	 YE3 RAL 080 90 10	 OR3 RAL 050 90 10	 RE5 RAL 010 90 10	 PU5 RAL 340 90 05	 BR4 RAL 050 70 10
 GY1 RAL 000 85 00	 BL4 RAL 260 80 15	 GR4 RAL 130 80 30	 YE2 RAL 075 80 40	 OR2 RAL 050 80 30	 RE4 RAL 020 80 20	 PU4 RAL 340 80 20	 BR3 RAL 050 70 20
 GY2 RAL 000 65 00	 BL3 RAL 260 50 25	 GR3 RAL 140 50 30	 YE1 RAL 1003	 OR1 RAL 2009	 RE3 RAL 020 60 40	 PU3 RAL 340 60 35	 BR2 RAL 040 30 30
 GY3 RAL 000 30 00	 BL2 RAL 260 30 20	 GR2 RAL 140 30 20			 RE2 RAL 020 30 40	 PU2 RAL 340 30 30	 BR1 RAL 8004
 BK1 RAL 9005	 BL1 RAL 5015	 GR1 RAL 6037			 RE1 RAL 3020	 PU1 RAL 4006	

We recommend ordering a full colour sample prior to specification and ordering. If you would like to order a sample or have any queries about this product please contact our Technical Sales Team on **0800 371 849** or email enquiries@zentia.com.

Please note that even though great care has been taken to ensure correct colour match, colours can only be as accurate as the printing process allows.

Every monitor or mobile display has a different capability to display colours, and every individual may see these colours differently.



Order a sample



If you would like to order a sample or have any queries about this product please contact our Technical Sales Team on **0800 371 849** or email enquiries@zentia.com

TDS 147.2.12.23