



Seismic RX[®]

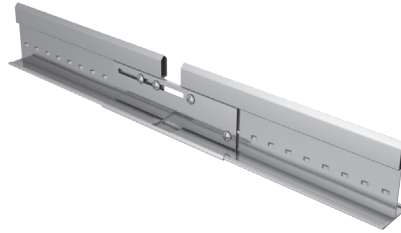
Exposed 24mm grid system with specialist installation accessories and detailing.

Key Features

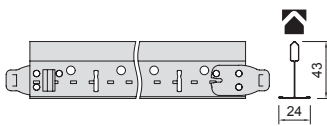
- // Independently tested system to withstand the forces from significant seismic activity or other severe events
- // Standard grid sections: Prelude 24 Peakform Main Runner and Prelude 24 XL² Cross Tees
- // Special accessories: quicker, more cost effective seismic installations
- // Solutions for moderate hazard and high/very high hazard areas
- // Ideal for seismic areas, nuclear, military and high risk areas

Physical Data

- // Material: galvanised steel
- // Surface finish: baked polyester paint
- // Colour: Global White

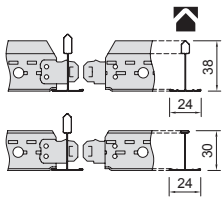


Prelude 24 – Universal Peakform Main Runners and Superlock Clip (Bulb-to-Bulb Connection)



Item No.	Dimensions (mm)				Standard Colours			
	Length	Width	Height	Slot Centres	Global White	White RAL 9010	Silver RAL 9006	Black
31 40 32 A	3600	24	43	100	•	•	•	•

Prelude 24 XL² – Cross Tees (Stab System, Override)



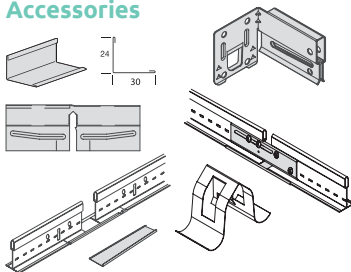
Cross Tees Slotted

31 31 51 B	1200	24	38	300	•	•	•	•
------------	------	----	----	-----	---	---	---	---

Cross Tees Unslotted

31 20 21 A	600	24	30	-	•	•	•	•
------------	-----	----	----	---	---	---	---	---

Perimeter Angle and Accessories



Item No.	Description	Dimensions (mm) Height
T 3024 HA	Perimeter angle, painted (Global White)	3000
BERC2	Main Runner end retaining clip	50
SJCG	Seismic joint clip XL ² Cross Tee (24mm)	-
SJMR15	Seismic joint clip Peakform Main Runner (24mm)	-
ES 4	Expansion sleeve (24mm)	100
442 A	Vector Seismic Clip	-

Sustainability



25



A+



EN 13964
E1

Fire Reaction



Euroclass A1
EN 13501-1

Performances & Features



30 Year
System
Guarantee

If you would like to order a sample or have any queries about this product please contact our Technical Sales Team on **0800 371 849** or email enquiries@zentia.com

TDS 121.1.04.23